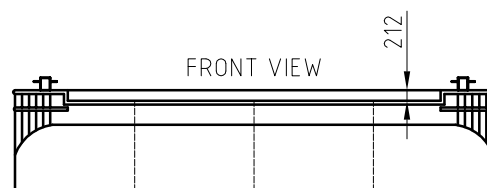
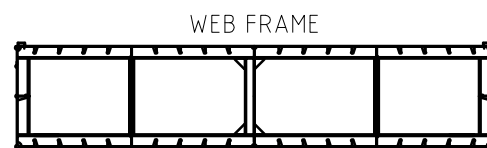
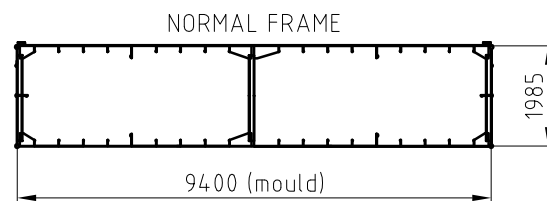


General particulars

Name	: Cornelis Sr
Type of vessel	: Flat top pontoon
Length (o.a.)	: 42.06 m
Length (b.p.p.)	: -
Breadth (o.a.)	: 9.49 m
Depth (mould)	: 1.985 m
Construction weight	: 135 ton
Empty draught (at sea)	: 0.40 m
Deadweight (at sea, s.w.l.)	: -
GRT / NRT	: -
Classification	: -
Remarks	: -



Please note: This drawing is indicative, please contact us for further details regarding the pontoon and its equipment (bollards, winches, manholes, anchors etc.)

02			
01			
00	21.02.2006	T. Lavrijssen	First Issue
REV.	DATE	DRAWN BY	REASON FOR REVISION
PAPER SIZE	SCALE	DRAWING NUMBER	DRAWING STATUS
A3	N.T.S.	VDWCORNSR-DWG01	PRELIMINARY

CLIENT	Van der Wees Watertransporten B.V.
PROJECT	Fleet drawings
DESCRIPTION	Capacity Plan "Cornelis Sr"

VAN DER WEES WATERTRANSPORTEN B.V.
's-Gravendeelsedijk 100, Dordrecht
P.O. Box 629, 3300 AP Dordrecht, Holland
Telephone : + 31 (0)78 - 648 26 65 info@vanderwees.nl
Telefax : + 31 (0)78 - 613 25 96 www.vanderwees.nl
Specialists in towage services and transports since 1907

