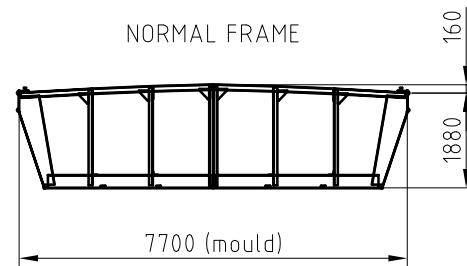
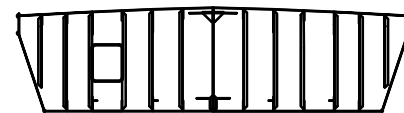


General particulars

| | |
|-----------------------------|--------------------|
| Name | : Lastdrager 20 |
| Type of vessel | : Flat top pontoon |
| Length (o.a.) | : 40.85 m |
| Length (b.p.p.) | : - |
| Breadth (o.a.) | : 7.81 m |
| Depth (mould) | : 1.88 m |
| Construction weight | : 100 ton |
| Empty draught (at sea) | : 0.42 m |
| Deadweight (at sea, s.w.l.) | : - |
| GRT / NRT | : - |
| Classification | : - |
| Remarks | : - |



WATERTIGHT BULKHEAD WITH DOOR
(frames 8 and 72)



Please note: This drawing is indicative, please contact us for further details regarding the pontoon and its equipment (bollards, winches, manholes, anchors etc.)

| | | | |
|------------|------------|----------------|---------------------|
| 02 | | | |
| 01 | | | |
| 00 | 21.02.2006 | T. Lavrijssen | First Issue |
| REV. | DATE | DRAWN BY | REASON FOR REVISION |
| PAPER SIZE | SCALE | DRAWING NUMBER | DRAWING STATUS |
| A3 | N.T.S. | VDWLD20-DWG01 | PRELIMINARY |

| | |
|-------------|------------------------------------|
| CLIENT | Van der Wees Watertransporten B.V. |
| PROJECT | Fleet drawings |
| DESCRIPTION | Capacity Plan "Lastdrager 20" |

VAN DER WEES WATERTRANSPORTEN B.V.
's-Gravendeelsedijk 100, Dordrecht
P.O. Box 629, 3300 AP Dordrecht, Holland
Telephone : + 31 (0)78 - 648 26 65 info@vanderwees.nl
Telefax : + 31 (0)78 - 613 25 96 www.vanderwees.nl
Specialists in towage services and transports since 1907

