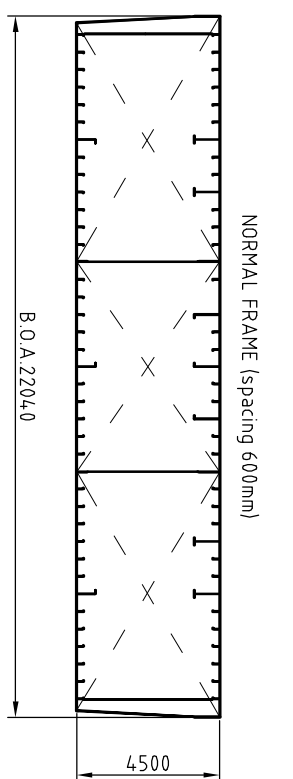
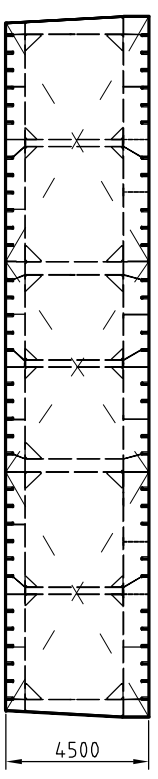


General particulars

Name : Lastdrager 35 IM09786281
 Type of vessel : Flat top pontoon
 Length (o.a.) : 75,0 m
 Length (b.p.p.) : 75,0m
 Breadth (o.a.) : 22
 Depth (mould) : 4.50 m
 Construction weight : 1034 ton
 Empty draught (at seal) : appx 0,77 m
 Deadweight (at sea, s.w.l.) : 4472 ton
 GRT / NRT : 1925 / 577 R.T.
 Classification : LR +100AN "Pontoon"
 Remarks : Suitable for spuds ϕ 910mm

Please note: This drawing is indicative, please contact us for further details regarding the pontoon and its equipment (bollards, winches, manholes, anchors etc.)



Allowable Load (indic.) ²	
A	225t
B	110t
C	160t
D	115t
E	160t
F	160t
G	160t
H	250t
I	150t
J	15t/m ²
K	160t
L	130t
M	250t
N	250t
O	160t

² Allowable Load always with minimum of 0,6x0,6m² loadspreading. Pints within 1 frame or bulkhead not to be added!

Draught [m] (u.s.k.)	Deadweight [ton]		Ton/cm		KMT [m]
	Freshwater	Saltwater	Saltwater	Saltwater	
0.73	-	0	14.5	55	
0.80	99	101	14.66	50.8	
1.00	386	396	14.92	4.119	
1.20	680	697	15.11	34.73	
1.40	977	1001	15.38	30.25	
1.60	1278	1310	15.53	26.79	
1.80	1584	1624	15.80	24.26	
2.00	1887	1943	16.06	22.25	
2.20	2211	2266	16.30	20.59	
2.40	2530	2593	16.43	19.14	
2.60	2852	2923	16.60	17.98	
2.80	3178	3257	16.73	16.95	
3.00	3505	3593	16.87	16.06	
3.20	3834	3930	16.88	15.22	
3.40	4164	4268	16.92	14.53	
3.50	4329	4437	16.93	14.21	
3.522	4363	4472	16.93	14.15	

02			CLIENT	Van der Wees Watertransporten B.V.
01	16-01-2017	W. Kock		
				Deckloads updated
00	21-06-2016	W. Kock	PROJECT	Fleet drawings
				First Issue
REV.	DATE	DRAWN BY	REASON FOR REVISION	
PAPER SIZE	SCALE	DRAWING NUMBER	DRAWING STATUS	
A3	N.T.S.	VDWLD35-DWG01	FOR INFORMATION	

KONINKLIJKE VAN DER WEES WATERTRANSPORTEN B.V.
 's-Gravendeelsedijk 100, Dordrecht
 P.O. Box 629, 3300 AP Dordrecht, Holland
 watertransporten@vanderwees.nl
 Telephone: + 31 (0)78 - 64.8 26 65
 Telefax : + 31 (0)78 - 613 25 96
 www.vanderwees.nl
 Specialists in towage services and transports since 1907