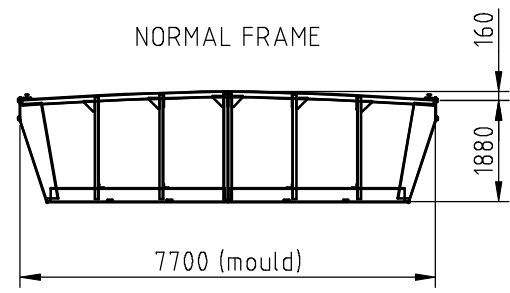


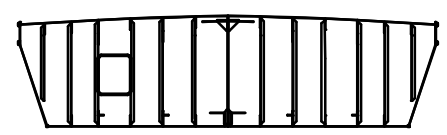
### General particulars

Name : Lastdrager 20  
 Type of vessel : Flat top pontoon  
 Length (o.a.) : 40.85 m  
 Length (b.p.p.) : -  
 Breadth (o.a.) : 7.81 m  
 Depth (mould) : 1.88 m  
 Construction weight : 95 ton  
 Empty draught (at sea) : 0.40 m  
 Deadweight : 351 ton  
 GRT / NRT : -  
 Classification : -  
 Remarks : -

Please note: This drawing is indicative, please contact us for further details regarding the pontoon and its equipment (bollards, winches, manholes, anchors etc.)



WATERTIGHT BULKHEAD WITH DOOR (frames 8 and 72)



Draught [m] (u.s.k.)	Deadweight [ton]		Ton/cm Freshwater	KMT [m]
	Freshwater	Saltwater		
0.40	0	2	2.49	10.71
0.60	50	53	2.58	7.66
0.80	102	107	2.67	6.24
1.00	156	162	2.75	5.43
1.20	212	219	2.83	4.94
1.40	269	278	2.91	4.60
1.60	327	337	2.96	4.33
1.80	387	399	3.00	4.05

REV.	DATE	DRAWN BY	REASON FOR REVISION
02			
01	23.06.2011	C. de Borst	Deadweight Table added
00	21.02.2006	T.Lavrijssen	First Issue

PAPER SIZE	SCALE	DRAWING NUMBER	DRAWING STATUS
A3	N.T.S.	VDWLD20-DWG01	PRELIMINARY

CLIENT	PROJECT	DESCRIPTION
Van der Wees Watertransporten B.V.	Fleet drawings	Capacity Plan "Lastdrager 20"

**KONINKLIJKE VAN DER WEES WATERTRANSPORTEN B.V.**  
 's-Gravendeelsedijk 100, Dordrecht  
 P.O. Box 629, 3300 AP Dordrecht, Holland  
 watertransporten@vanderwees.nl  
 Telephone: + 31 (0)78 - 648 26 65 www.vanderwees.nl  
 Telefax : + 31 (0)78 - 613 25 96  
 Specialists in towage services and transports since 1907

