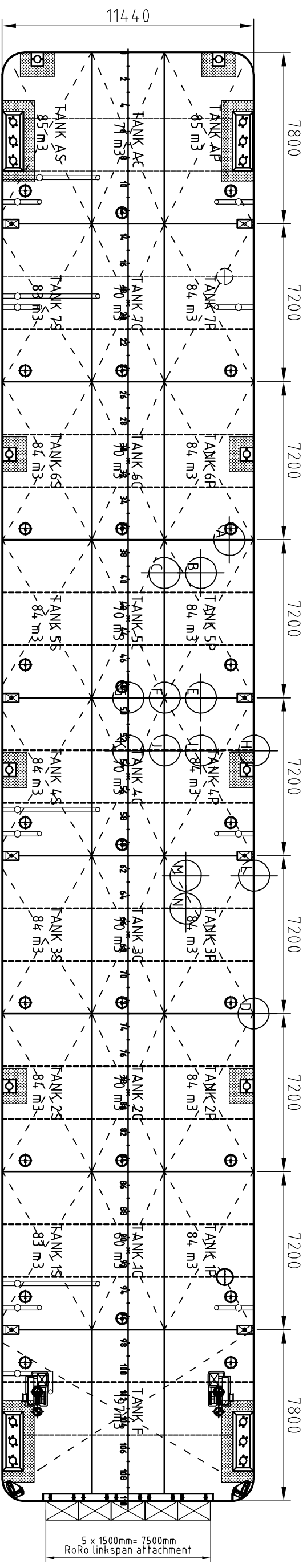
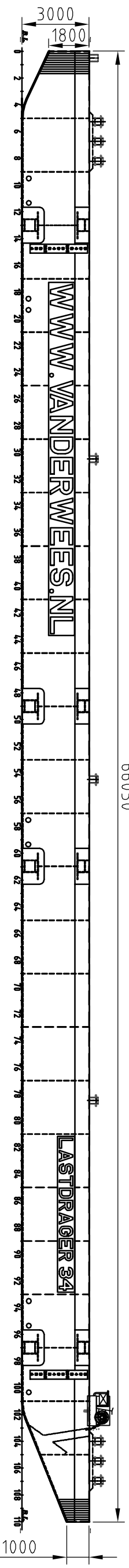


TOP VIEW



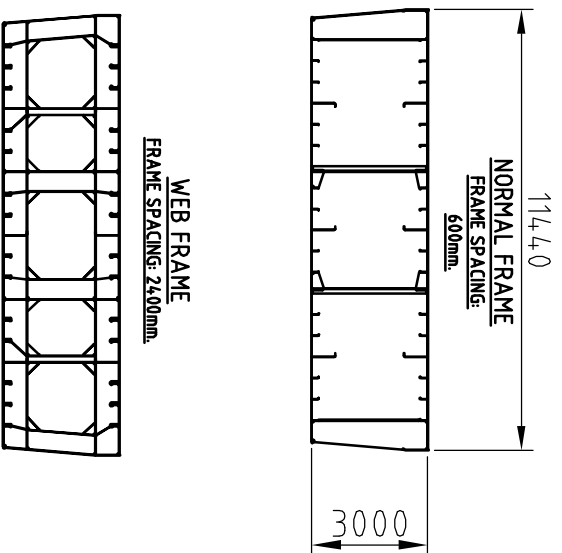
SIDE VIEW



general particulars

Name : Lastdrager 34 - IMO 9807762  
 Type of vessel : Flat top pontoon  
 Length (o.a.) : 66.04 m  
 Length (b.p.p.) : 63.36 m  
 Breadth (o.a.) : 11.44 m  
 Construction weight : 359.39 ton  
 Empty draught (at sea) : 0.574 m  
 GRT/ NRT : 579/173 R.T.  
 Classification : \*100 AN, Pontoon, WDL  
 Remarks : Suitable for spuds  $\phi$  610

Please note: This drawing is indicative, please contact us for further details regarding the pontoon and its equipment (bollards, winches, manholes, anchors etc.)



Allowable Load (indic.)	Draught [m]	Deadweight [ton]		Ton/cm Saltwater	KMT [m]
		Freshwater	Saltwater		
A	0.57	0	0	6.96	18.60
B	0.7	89	91	7.09	15.30
C	0.9	228	234	7.19	12.27
D	1.1	370	379	7.3	10.38
E	1.3	513	526	7.43	9.11
F	1.5	658	675	7.48	8.13
G	1.7	805	825	7.57	7.45
H	1.9	954	978	7.66	6.93
I	2.1	1104	1132	7.72	6.51
J	2.135	1254	1159	7.72	6.44
K		1004			
L		1154			
M		1147/m2			
N		1004			

02		CLIENT	Koninklijke Van der Wees Watertransporten	
01		PROJECT	Fleet drawings	
00	17-07-2017	W.Kock	First Issue	
REV.	DATE	DRAWN BY	REASON FOR REVISION	
PAPER SIZE	SCALE	DRAWING NUMBER	DRAWING STATUS	
A3	N.T.S.	Please enter	PRELIMINARY	DESCRIPTION Capacity Plan "Lastdrager 34"

**KONINKLIJKE VAN DER WEES WATERTRANSPORTEN B.V.**  
 's-Gravendeelsedijk 100, Dordrecht  
 P.O. Box 629, 3300 AP Dordrecht, Holland  
 watertransporten@vanderwees.nl  
 Telephone: + 31 (0)78 - 64.8 26 65  
 Telefax : + 31 (0)78 - 613 25 96  
 www.vanderwees.nl  
 Specialists in towage services and transports since 1907