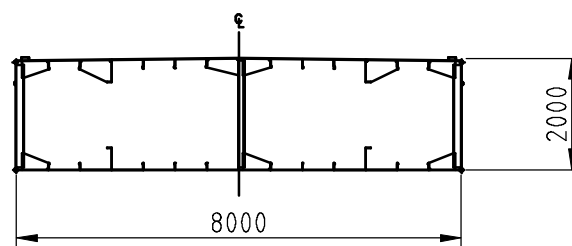


General particulars

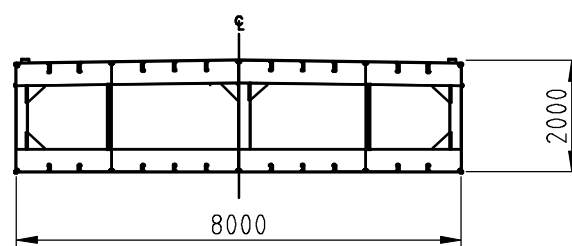
| | |
|------------------------|--|
| Name | : Lena 2 |
| Type of vessel | : Flat top pontoon |
| Length (o.a.) | : 45.03 m |
| Length (b.p.p.) | : - |
| Breadth (o.a.) | : 8.05 m |
| Depth (mould) | : 1.95 m |
| Construction weight | : 120 ton |
| Empty draught (at sea) | : 0.39 m |
| Deadweight | : 446 ton |
| GRT / NRT | : - |
| Classification | : - |
| Remarks | : Suitable for spuds $\phi 610\text{mm}$ |

Please note: This drawing is indicative, please contact us for further details regarding the pontoon and its equipment (bollards, winches, manholes, anchors etc.)

NORMAL FRAME (spacing 600mm)



WEB FRAME (spacing 2400mm)



| Draught [m] (u.s.k.) | Deadweight [ton] | | Ton/cm Freshwater | KMT [m] |
|-------------------------|------------------|-----------|----------------------|---------|
| | Freshwater | Saltwater | | |
| 0.40 | 3 | 6 | 3.18 | 13.98 |
| 0.60 | 67 | 72 | 3.26 | 9.58 |
| 0.80 | 133 | 139 | 3.34 | 7.42 |
| 1.00 | 200 | 208 | 3.42 | 6.16 |
| 1.20 | 268 | 279 | 3.49 | 5.40 |
| 1.40 | 339 | 350 | 3.57 | 4.83 |
| 1.60 | 410 | 423 | 3.58 | 4.46 |
| 1.80 | 481 | 496 | 3.58 | 4.15 |

| | | | | | |
|------------|------------|----------------|------------------------|-------------|------------------------------------|
| 02 | | | | CLIENT | Van der Wees Watertransporten B.V. |
| 01 | 23.05.2011 | C. de Borst | Deadweight table added | PROJECT | |
| 00 | 10.01.2006 | T.Lavrijssen | First Issue | DESCRIPTION | |
| REV. | DATE | DRAWN BY | REASON FOR REVISION | | |
| PAPER SIZE | SCALE | DRAWING NUMBER | DRAWING STATUS | | |
| A3 | N.T.S. | VDWLENA2-DWG01 | PRELIMINARY | | Capacity Plan "Lena 2" |

KONINKLIJKE VAN DER WEES WATERTRANSPORTEN B.V.
 's-Gravendeelsedijk 100, Dordrecht
 P.O. Box 629, 3300 AP Dordrecht, Holland
 watertransporten@vanderwees.nl
 Telephone: + 31 (0)78 - 648 26 65 www.vanderwees.nl
 Telefax : + 31 (0)78 - 613 25 96
 Specialists in towage services and transports since 1907

