

Kilstroom



Multi purpose workboat - DP1

IMO nr.	9766425
Call sign	PDTI
Type	Multi Cat 3013 DP1
Constructed	2020
Bollard Pull	39.8 T
Speed	11.0 knots
Free deck space	170 m ²
Deckload	12.5 ton/m ²
Home Port	Hardinxveld-Giessendam, The Netherlands

Basic functions

Towing, Anchor Handling, Dredge support, Diving support, Oil & Gas support, Sustainable Energy support, Surveying, Ploughing

Engines	3x Caterpillar, type C32-TTA ACERT, each 746 kW / 1.015 HP @ 1800 rpm
Gear Boxes	3x Reintjes, type WAF 562 L reduction 5.947:1
Generator Sets	2x Caterpillar, type C4.4, each 107 kVA, voltage 230/400 VAC - 50 Hz
Hydro Set	1x Caterpillar, type C32-TTA ACERT, 632 kW @ 1800 rpm
Propulsion	3x Fixed pitch propeller in Van der Giessen Optima Nozzle (Ø 1700 mm)
Bow Thruster	Hydraulically driven FPP (PS push bow), 294 kW / 400 HP (Ø 1060 mm)

GRT	341 GRT en 102 NT
Dimensions	30.30 x 13.42 x 3.80 mtr.
Draft (min. / max.)	2.60 / 3.10 mtr.
Displacement	530 T

Tank capacities	Fuel oil	170.0 m ³	Hydr. oil	4.4 m ³	Sewage	6.8 m ³	Potable water	25.0 m ³
	Lubr. oil	2.8 m ³	Dirty oil	4.4 m ³	Bilge water	2.8 m ³	Fresh water trim	53.0 m ³

Transfer pumps Fuel / Fresh water, type SIHI - 50 m³/hr. @ 4.8 bar

Nautical equipment Praxis DP1 system - 2x Radar (sea/river) - Magnetic compass - 2x Gyro compass - Auto pilot - GPS / Satellite navigation system Full ECDIS - AIS - 2x Echosounder - Speedlog - Windindicator 2x VHF + DSC - 1x VHF - SSB Radio + DSC - Navtex - V-SAT system - 2x Inmarsat-C - EPIRB - SART 2x HH VHF - Satcom + GSM

Deck equipment Hydr. cranes, 2x Heila, type HLRM 440/4S, 440 T/m (12.3 T @ 20.6 mtr / 55.0 T @ 5.71 mtr.) Hydr. winch on Fwd. crane, 10 T - 50 mtr. wire Towing winch, Kraaijeveld, 900 mtr., Ø 40 mm steel wire, 40 / 100 T + incl. AH winch, Kraaijeveld, 200 mtr., Ø 54 mm steel wire, 150 / 170 T Tugger winch (2x), power 12 T - Hydr. Deltapin wire catcher / Chain stopper, SWL 100 T (fore deck) & Hydr. Towing pins, SWL 65 T (aft deck) Bow roller, L. 6.00 mtr., Ø 1200 mm, SWL 170 T & Stern roller, L. 3.00 mtr., Ø 1200 mm, SWL 100 T 2x Towing hook SWL 20T & Gob eye, SWL 55 T - Container locks (7x 20 ft. / 3x 10 ft.) - Push bow / stern

Special equipment HV/AC installation - Sewage treatment plant - Fuel oil separator Moonpool (1.000 x 1.000 mm)

Optional A-frame 50 T / 25 T (with plough) / 4p-Mooring system / Spudpoles, L. 16 mtrs Waterinjection Dredging system / ROV - Diving Ops. platform / Dynamic position

Accommodation 11 persons (3x single & 4x double cabins) + optional 1x TLQ (2-4 persons)

Classification BV - I # HULL • MACH / Tug, Special service - Multi purpose ship / • AUT-UMS / DYNAPOS AM/AT / CLEANSHIP / GREEN PASSPORT / IN WATER SURVEY / ANCHOR HANDLING DSI - Unrestricted navigation

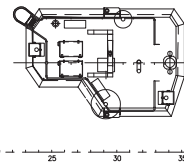
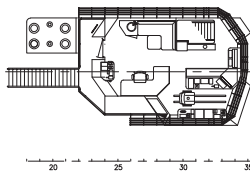
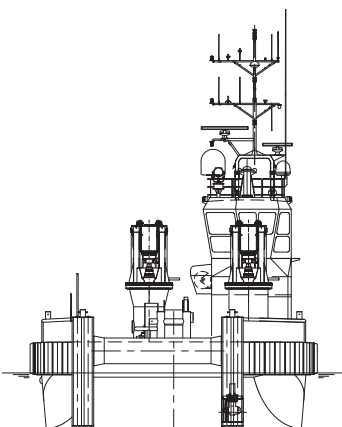
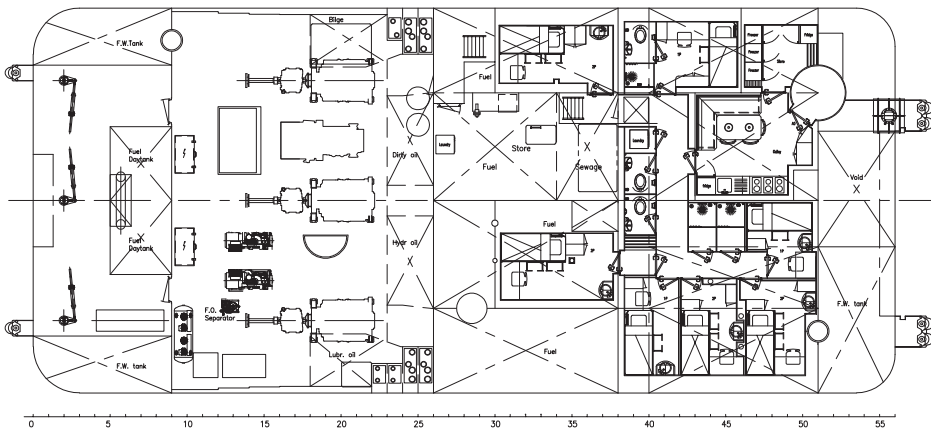
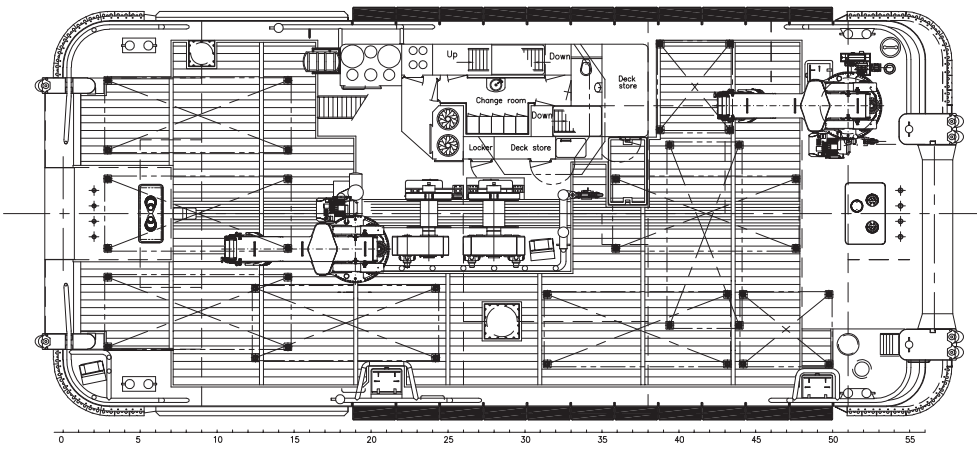
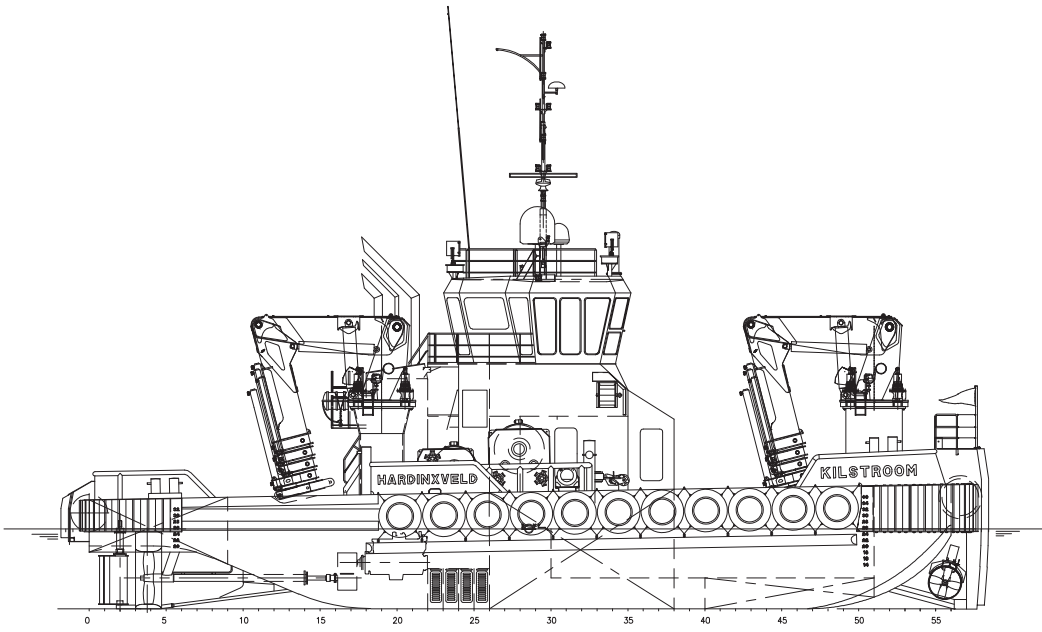


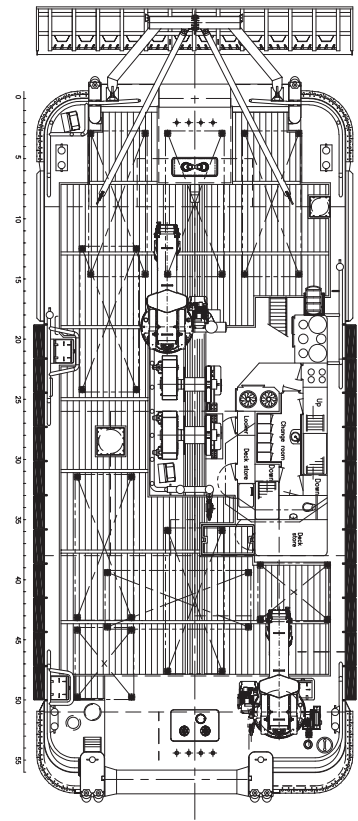
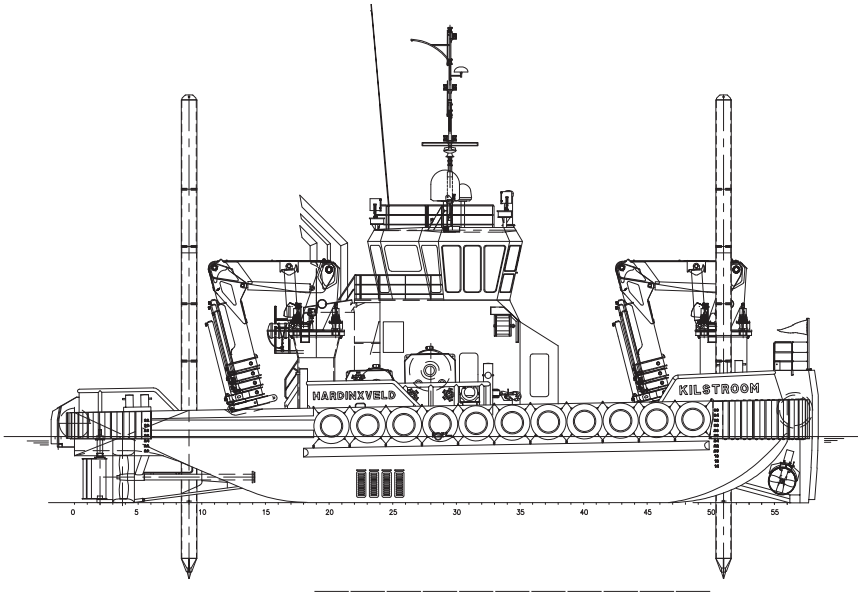
Van Wijngaarden Marine Services BV

Buitenweistraat 15, 3372 BC Hardinxveld-Giessendam
The Netherlands

E info@wijngaarden.com
T +31 (0) 184 490 244

wijngaarden.com





TOP VIEW

